

PRODUCT
MANUAL



CONTENTS

WARRANTY	02
STRUCTURE	06
DISMANTLING	07
CONTROL	08
MOTION	11
BASIC INSTRUCTIONS	12
CONVERTING SOUND FONTS	14
TROUBLESHOOTING	15
XENO CONFIGURATOR BASIC GUIDE	16
• Connecting your XENO3 board	18
• Main app screen layout	20
• Saber setting (basic)	24
• Saber setting (motion control)	26
• Customization	32
• Setting light effect	34
• Adjust volume	36
• Color palette	37
• My saber	38
• APP settings	40
• Xeno Configurator Privacy Policy	42

SAFETY NOTICE

Fully charge saber before operating! Use only included cable with 5V 1A Usb or 5V wall charger. Failure to comply with these instructions could result in a fire hazard, or damaged electronics! This will void your warranty!!!

Warning:

This product is not suitable for children under 14 years old.

Children under the age of 16 years should always be supervised by an adult to prevent injuries.

Always act responsible, safe and respectful.

| WARRANTY

Our full saber electronic kits and hilt products carry a one (1) year limited warranty from date of receipt.

This warranty covers defects found in original workmanship and original materials only, and does not extend to modified products of any kind.

The warranty does not apply to software for electronics; modifying software or firmware may alter the operation of your hardware. Issues caused by software changes (such as the product becoming unresponsive, lag and sound issues, blown speakers from increased volume beyond safe levels) are not covered by this warranty, but will not void your warranty against other manufacturing defects.

Products where damage and wear are expected, such as blades and batteries, may be exempt from warranty, solely at the discretion of the seller. Software, and exempt parts will only be considered at the discretion of the seller on a case by case basis, taking into account time frames from purchase and scope of use.

① Warranty Disclaimer:

Including the previous limitations, please be advised that we do not offer warranty service on products as follows:

- Products that have exceeded the limited one year period.
- Products where the customer has failed to comply with requirements of product use. This includes improper storage, neglect to maintenance, improper battery storage or use, or any damage caused to the electronics or hilt.

* Please note, your vendor might still provide services for the above situations, if the buyer agrees to cover shipping and parts. This is not a requirement of our vendors to honour the warranty past the one year from date of receipt; as such, this is entirely at the discretion of the vender.

② Missing Parts:

Rarely, some items might be overlooked in the packing process, or out of stock at the time of packing. These items are part of your saber product, and include the following:

- Screws
- Hex Key
- Charging cable (external charger on select hilts)
Blade size adapter (only select hilts)
- Crossguard side blades (for select hilts)

If any of these items are missing, please reach out to your vendor to have them provide service for the missing part.

③ Extras:

When stock is available, your vendor will, at times, provide extra, or bonus, products. These extras include, but are not limited to, the following:

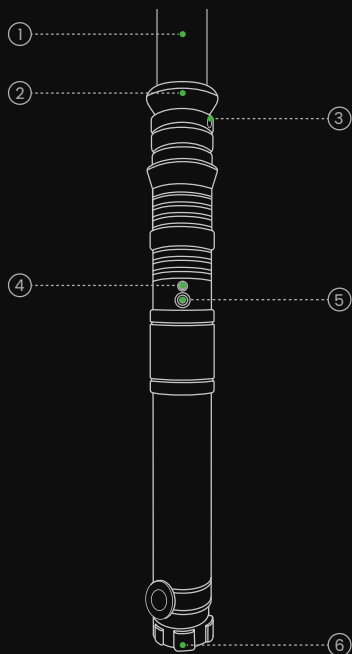
- Protective (collector) hard cases
- Protective ABS soft cases
- Extra control box PCB plates
- Blade plugs
- Display stands
- Crystals
- Covertec clips or buttons

- O-rings
- Beskar Ingots
- Couplers or connectors
- Grip wraps

These items, unless purchased individually from your vendor, are non-essential, bonus products. The sole purpose of these extras is to provide additional protection in transit (cases) or non-essential options for your product.

In the case where you purchased these items separately, you can reach out to your vendor for assistance; otherwise, any extra or bonus product that is broken, missing or defective is not covered under this warranty in any way, and will not be replaced.

STRUCTURE



① Blade

② Emitter

③ Blade retention screw holes

④ Recharge port

⑤ Button

⑥ Sound holes

< 6 >

DISMANTLING

① Rotate and unscrew the saber body



② Unscrew the front and back screws of the handle



③ Push the switch button from the handle surface into the hilt



④ Pull down the inner core structure



< 7 >

CONTROL

Press and hold the LED button to bring out of sleep mode. You will hear a 'Power On' voice, and the LED button will turn on. The saber is now in Wake mode. Watch this LED when controlling the saber, as listed in the table below. Press the button once quickly, to turn the saber blade on.

When Saber Blade Is Off:

Control	Effect
Button LED flashes one time (Hold button 0.5 seconds)	Adjust volume
Button LED flashes two times (Hold button 1 second)	Change light effect
Button LED flashes three times (Hold button 1.5 seconds)	Change blade mode
Button LED flashes four times (Hold button 2 seconds)	Change to last font
Point down hilt and twist (Counterclockwise and then clockwise)	Change to next font
Point up hilt and twist (Counterclockwise and then clockwise)	Play music

When Saber Blade Is On:

Control	Effect
Hold button and clash hilt	Lock Up
Button LED flashes one time (Hold button 0.5 seconds)	Drag
Button LED flashes two times (Hold button 1 second)	Infinite color change
Button LED flashes three times (Hold button 1.5 seconds)	Turn off saber
Point down hilt, hold button and twist (Counterclockwise and then clockwise)	Standard color change
Point down hilt, hold button and twist (Clockwise and then counterclockwise)	Twist color change
Point up hilt, hold button and twist (Clockwise and then counterclockwise)	Force effect

When Saber Blade Is On:

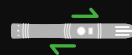
Control	Effect
Click button	Blaster/Blaster deflect
Thrust the hilt forward	Stab
Spin the hilt quickly	Spin
Hold button, and stab hilt (Twist to change melt color)	Melt
Hold button and pull hilt inwards	Lightning block
Enter into LOCK UP first, Then button LED flash one time (Hold button 0.5 seconds)	Multi lock mode
Hold button and swing saber (Same control to exit mode)	Multi block mode
Hold button 10 seconds (After saber blade is off)	Deep sleep/ Deactivate saber

MOTION

Advanced Controls:

- There are several motion or manual controls available on the Xeno V3.

① A direct and quick stabbing motion with the hilt level will turn the blade on or off.



② A quick twist while the hilt is pointed down will change the font to the next on the list.



③ Twist quickly when the handle is pointed up. The music track will play and a quick spin again will stop the music.



④ Hold the button and impact the hilt/blade to activate lockup. Release the button to end the lockup.



⑤ While holding the button, a quick twist while the hilt is pointed down will change the selected blade color. Release the button to select the current color.



I BASIC INSTRUCTIONS

- Press and hold the LED button to bring out of sleep mode. You will hear a 'Power On' voice, and the LED button will turn on.
- Press the button once, quickly, to turn the blade on.

The following controls activate when the blade is on, and are based on the flash of the LED button light:

- ① A quick press will initiate a single blaster deflect effect.
- ② Press and hold the button for ONE flash, then release. This will initiate the drag effect. A quick press will end the drag effect.
- ③ Press and hold the button for TWO flashes, then release. This will initiate blade color change cycle. A quick press will set the blade color.
- ④ Continue to hold the button PAST 2 flashes to turn off the blade.

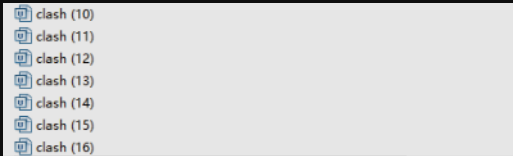
While the blade is off, the following controls are activated based on the flash of the LED button light:

- ① Press and hold the button for ONE flash, then release. This will change the volume. There are 3 volume settings: Volume High, Volume Low, and Mute.
- ② Press and hold the button for TWO flashes, then release. This will change the blade effect. There are 8 blade effects: Steady, Unstable, Rainbow Blade, Candy blade, Cracked blade, Pulse, Flash blade and Fire blade.

- ③ Press and hold the button for THREE flashes, then release. This will change the blade mode; There are several blade modes, including some pre-on effects. Blade effects will affect pre-ons, but will not have any effect on Blaster Blade and Ghost Blade modes. Only blade color and font selection impact these modes.
- ④ Press and hold the button for FOUR flashes, then release. This will change the sound font. The selection of fonts can be customized by the user.

CONVERTING SOUNDFONTS

- Converting sounds over to work with XenoPixel can take some patience, but it is not a difficult process. At this time, conversion must be done manually.
- The font folder must be numbered sequentially; XenoPixel will not read folders with names. You won't likely have to edit any sound files from existing popular soundfont formats, such as Proffie or CFX, but you will have to remove some files, and rename others.



- The above example shows XenoPixel accepted sound file types. Although the example only shows a maximum of 2 for each sound, you can add many more (tested up to 16). Windows 10 will automatically number renamed files of the same name, making converting multiple files of the same type much easier.

TROUBLESHOOTING

① Saber still doesn't start after charging?

Remove the battery and check the battery contact plates, to ensure they are making contact. Gently bend them out if they are not making contact, reinsert the battery, and turn on the saber, if there is no response, charge again. If possible, use an external charger.

② Saber has no swing, hum, orclash sounds?

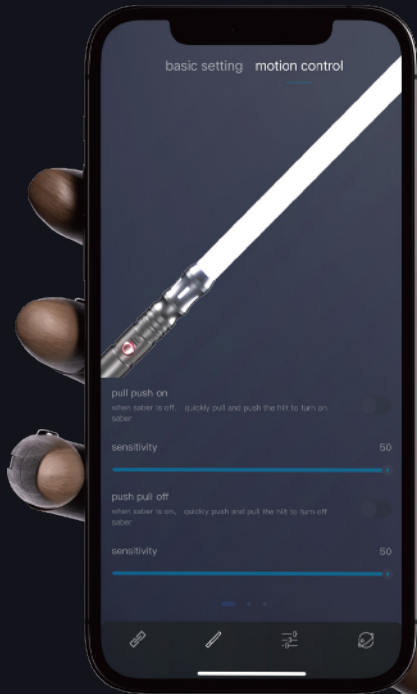
Usually this is from low battery power. Charge the saber for a few hours. For Xenopixel sabers, ensure files are setup on the micro SD card, and ensure the micro SD card is seated properly.

③ Saber stops working suddenly?

Remove the battery and check the contact plates. Reinsert the battery, charge the saber and try again. If there is no response, contact your seller.

④ Saber is hot near the emitter?

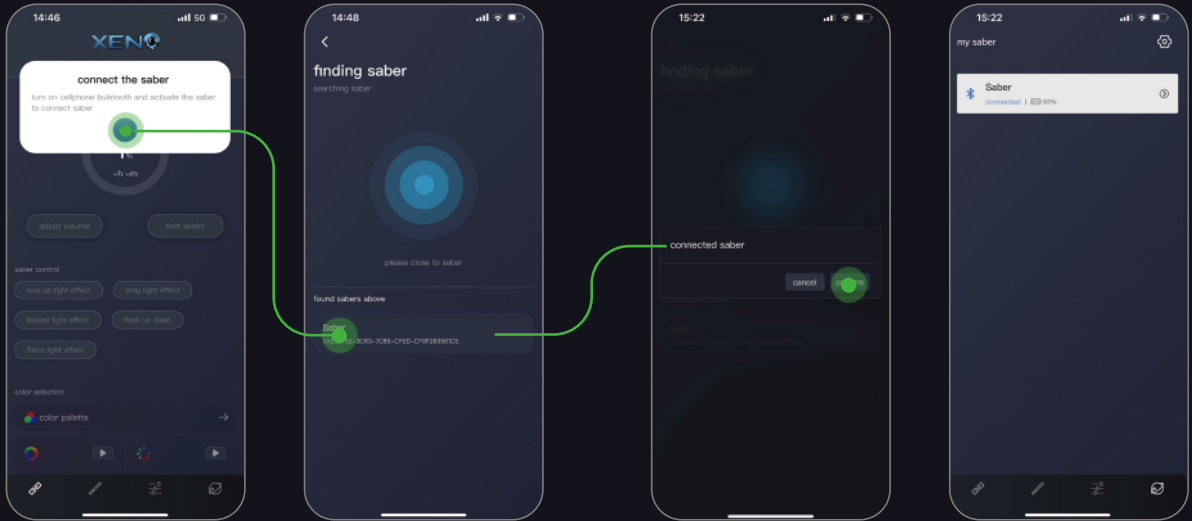
It is normal for the LED in the emitter to generate heat, but the emitter should diffuse most of the heat. As such, please do not turn on the electronics outside of a hill, as the heat may damage the chassis without the aluminum emitter to diffuse the heat.



XENO CONFIGURATOR BASIC GUIDE

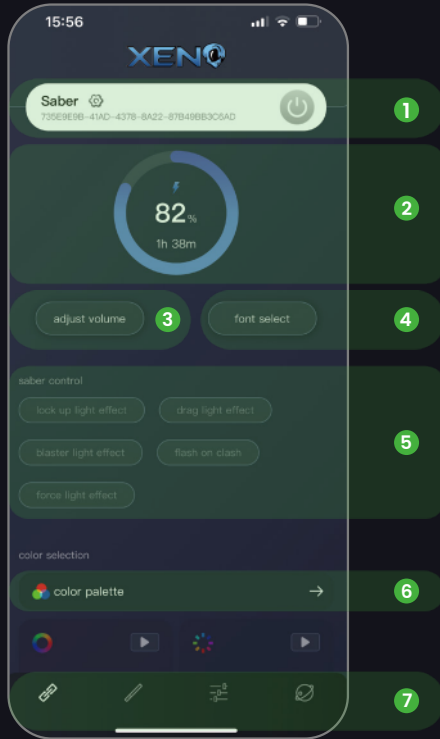
“  Click ” | “  Jump ”

CONNECTING YOUR XENO3 BOARD:



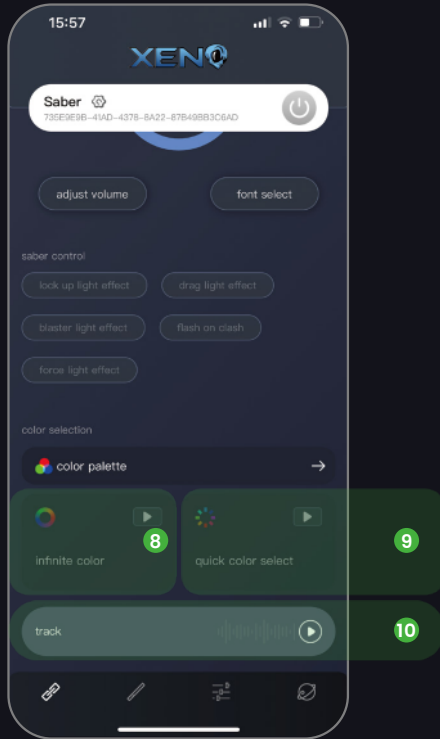
- Upon launching the app, it will ask to connect to your saber.
- Make sure your saber hilt is on, then allow your device to connect by turning on Bluetooth. Once Bluetooth is on, press the blue arrow button to search for your saber.
- The app can recognize and keep track of multiple sabers.
- Once connected, a pop up notification will show in the middle of the app screen advising that your saber is now connected. The saber itself will give an audio prompt confirming the connection as well.
- From there, your saber should show under the 'My Saber' tab, as seen above.

MAIN APP SCREEN LAYOUT:



- ① The connected Saber. The assigned name is on the left, with the settings gear beside it. The power button on the right powers the hilt on.
- ② Power Circle. This shows the estimated remaining battery power by percent, with the estimated time below. This feature refreshes when powered on.
- ③ Font Select. This feature allows the user to select the font they wish to test or modify.
- ④ Adjust Volume. This feature allows users to change the main volume of the hilt from 1- 100.
- ⑤ Saber Control Features. When the blade is ignited, these features become accessible. This allows test features such as blaster, lock up and drag effects.
- ⑥ Color Palette. This allows users to select blade color from a full palette, manually.
- ⑦ Option Categories. From left to right: Main Screen, Settings, Customization, and My Saber.

MAIN APP SCREEN LAYOUT (CONT.):



⑧ Quick Color Select. While the saber is on, press this to activate. This will cycle through a set of popular colors. Press again to select current color.

⑨ Infinite Color mode. While the saber is on, press this to activate. This will cycle through a full spectrum for color selection. Press again to select current color.

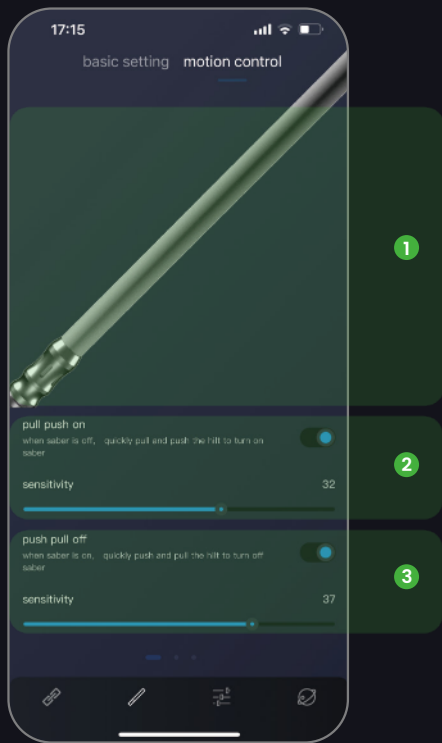
⑩ Track Play. If there is a track (1).wav file in the font folder for the selected font, this function will allow the user to play it. Saber must be on to function. (not blade)

SABER SETTINGS (BASIC):

- ① The main blade LED Pixel count/length. A 92cm blade is 132; adjustments will need to be made for smaller or longer blades.
- ② Blade brightness. This scales the overall brightness of the pixels in the blade. 100% is fully lit, and is the default setting.
- ③ Side Blade Setting – turning this on allows the hilt to utilize side pixel blades.
- ④ Flash on Clash sensitivity indicates how easily the board will display a flash when the blade is hit. 24-26 are standard or default, higher is more sensitive, lower less sensitive.
- ⑤ PowerOn/Power Off times. This is the length of time it takes, holding the main button/switch, to activate and deactivate the saber from, and back to, deep sleep mode.
- ⑥ Pre on light effects. This selects from the available pre on lighting effects available.
- ⑦ Pre on effect time. This is the length of time, in seconds, that it takes to start and end the preon, which then leads into the on state of the saber.



SABER SETTINGS (MOTION CONTROL):

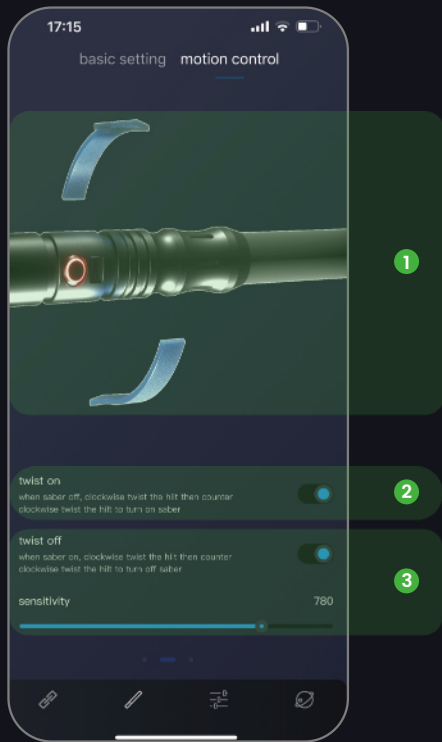


① Visual representation of blade and movement per setting.

② Pull-Push On. Use the toggle to turn on and off this motion control, and the sensitivity bar to control how easy it is to activate. 18 is default.

③ Push-Pull Off. Use the toggle to turn on and off this motion control, and the sensitivity bar to control how easy it is to activate. 13 is default.

SABER SETTINGS (MOTION CONTROL) (CONT.):

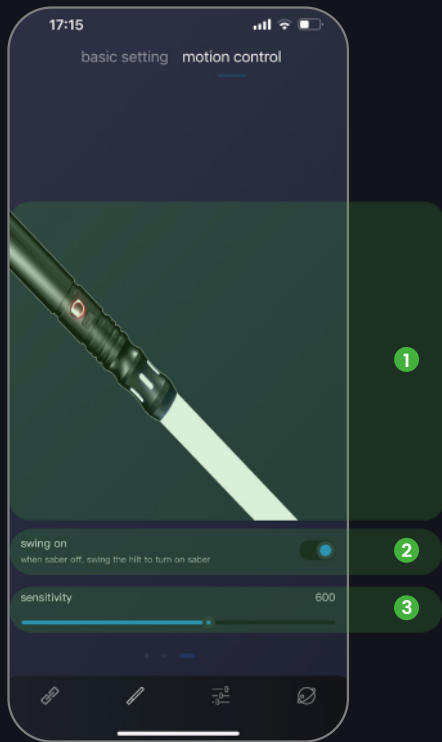


① Visual representation of blade and movement per setting.

② Twist On. Use the toggle to turn on and off this motion control, and the sensitivity bar to control how easy it is to activate. Basic in App is around 500, with higher numbers being more sensitive. Sensitivity affects both on and off motions.

③ Twist Off. Use the toggle to turn on and off this motion control, and the sensitivity bar to control how easy it is to activate.

SABER SETTINGS (MOTION CONTROL) (CONT.):



- ① Visual representation of blade and movement per setting.
- ② Swing On. Use the toggle to turn on and off this motion control.
- ③ Sensitivity bar to control how easy it is to activate. Basic in App is around 500, with higher numbers being more sensitive.

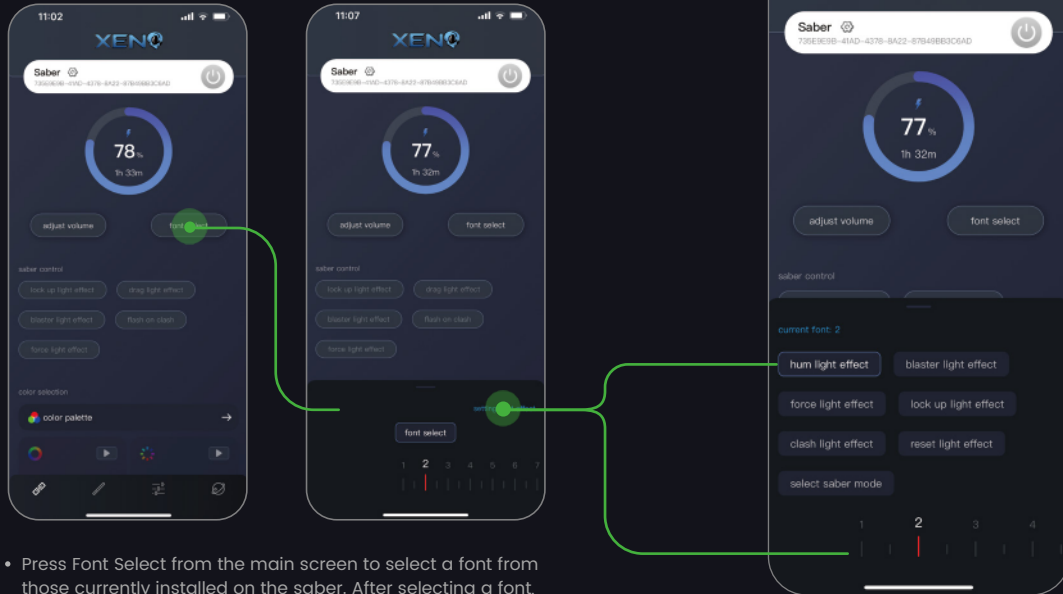
CUSTOMIZATION:

These features are not yet implemented, and as such, details concerning their use will change on their release.

- ① Custom Function may allow for special configuration options.
- ② Custom Light Effect will allow users to control certain aspects of individual lighting effects or blade styles.
- ③ Custom Font will allow users to add new fonts through the app.



SETTING LIGHT EFFECT:



- Press Font Select from the main screen to select a font from those currently installed on the saber. After selecting a font, you'll have the option to edit the light effect of the saber for that selected font by pressing 'Setting light effect'. Hum light effect changes the basic lightstyle, from options like fire blade, unstable and pulse; Saber Mode selects the use of the blade, such as Ghost Blade or Blaster mode. Reset light effect returns the fonts light effects to a default setting.

The other options: blaster light effect, Force light effect, clash light effect and lock up light effect, each have options for a different style of those features. More features will be added in the future, though many options will be included in the Customization option in the future as well.

ADJUST VOLUME:



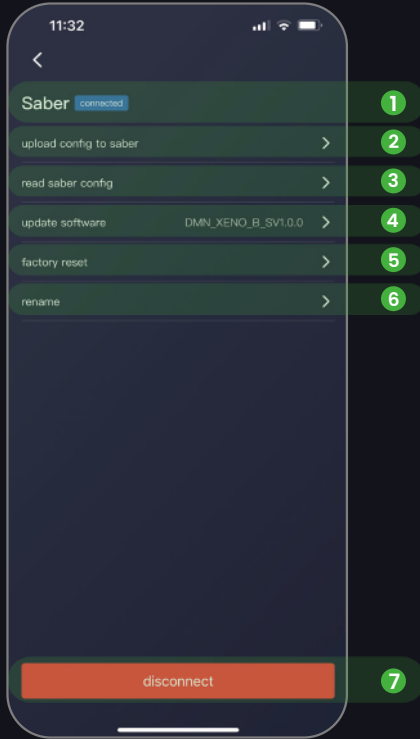
- Pictured here is the Volume Adjust screen. Higher numbers are louder, and full volume might cause distorted sound on some setups. No volume will result in muting the saber.

COLOR PALETTE:



- Pictured here is the Color Palette. This allows the user to select the color manually, from pressing on the color, or by entering an RGB value from 0-255 for each color (Red, Green, and Blue).

MY SABER:



① The name of the connected saber. Additionally, the status of the connection will appear to the right.

② Upload Config to Saber is a feature still being worked on. This will allow users to upload app changes to the saber directly.

③ Read Saber Config allows the app to read the instructions in the config.ini file found in the 'Setting' folder on the SD card.

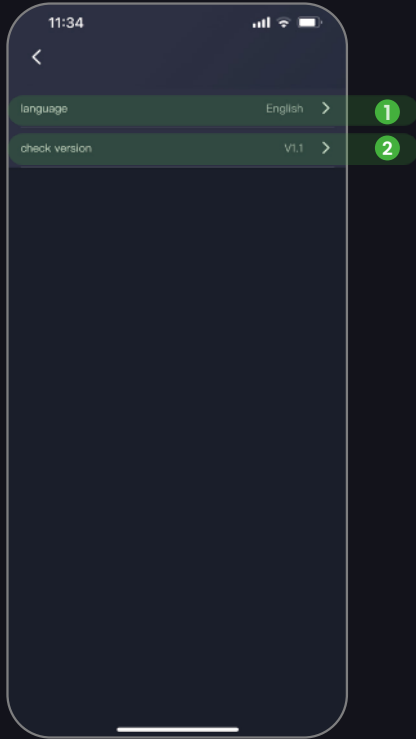
④ Update Software allows the user to update the firmware for the board, allowing for new features. This feature may shut off the saber, in order to reload with new settings. Updates will be released sporadically, so it's best to check every few weeks.

⑤ Factory Reset will return the Xeno3 board back to it's factory released state. Do this if you encounter any errors with your board, at the instruction of your vendor.

⑥ Rename allows you to rename the saber for use with the app.

⑦ Disconnect – allows user to disconnect the board from the app.

APP SETTINGS:



- ① Select the language for the app. More options could be added in the future.
- ② Check version of the app. This will ensure that you are using the most up to date version of the app.

XENO CONFIGURATOR PRIVACY POLICY:

Privacy Policy Reminder:

In order to better protect your rights and comply with relevant supervisory requirements, we will explain to you how we collect, store, protect and use your information through the "Privacy Policy".

What information we collect and how to use it:

Circumstances in which you must authorize us to collect and use your personal information.

The purpose of collecting personal information is to provide you with products and/or services, and to ensure that we comply with applicable laws, regulations and other regulatory documents. You have the right to choose whether to provide this information, but in most cases, if you do not provide it, we may not be able to provide you with the corresponding services, nor can we respond to the problems you encounter. These functions include:

① Device connection

In order to enable you to connect and manage lightsaber devices safely, we may collect information about your mobile phone, IP address, and lightsaber devices. This information will be used to provide you with Lightsaber device connection, discovery of nearby devices and device management features. The above information is listed in detail as follows:

- Mobile phone related information:
hardware device identification (imsi, imei, meid, device hardware serial number, SIM card identification, OAID, Mac address, Android ID), mobile phone model, system version information, system language, country or region set by the mobile phone, The version number of the application store, the screen size and resolution of the mobile phone, CPU and display device related information.
- Information collected during device connection:
For smart devices connected via Bluetooth, we may collect the Bluetooth Mac address and device ID of the device.

You can choose whether to authorize us to collect and use your personal information In order to enable you to better enjoy the device control and management provided to you, we may collect and use your personal information in the following additional functions. If you do not provide such personal information, you can still use basic services, but you may not be able to use these additional functions that can bring you convenience. These additional features include:

XENO CONFIGURATOR PRIVACY POLICY (CONT.):

② Application and firmware upgrade

In order to enable you to continue to enjoy the latest services, we may use your current application version information and mobile phone model to provide you with application upgrade services. At the same time, we may collect your connected lightsaber device list and version number information to provide you with the upgrade function of the lightsaber device to ensure that you can use the latest version of the service (including firmware version).

③ Instructions for Invoking Permissions

simultaneously inform you of the purpose of using this permission when applying for permission in the product use process, and the possible impact on your use of services if you do not enable this permission, please read carefully. Before using specific functions, you can choose whether to authorize the following permissions. At the same time, you can change the authorization status at any time through the permission setting page of the device or the "My-Settings -System Permission Management" page in the app.

The following are the details of related functions and calling permissions, for your reference:

- Enable Bluetooth permission (Android, iOS version):

When used for quick connection devices, connect to the Bluetooth signal sent by the device for device communication; for lightsaber devices connected via Bluetooth, Bluetooth permission is also required for communication.

- Location permission (Android version):

Scanning BLE devices requires enabling location permission.

- Network access permission (Android, iOS version):

used for firmware download and update, and APP version update.

- Storage permission (Android version):

used to upload and download configuration files.

XENO CONFIGURATOR PRIVACY POLICY (CONT.):

You are fully aware that we do not need your consent to collect and use personal information in the following circumstances:

- Related to the fulfillment of the obligations stipulated by laws and regulations by the personal information controller;
- Directly related to national security and national defense security;
- Directly related to public security, public health, or major public interests;
- Directly related to criminal investigation, prosecution, trial and execution of judgments;
- For the purpose of safeguarding the life, property and other major legal rights and interests of the personal information subject or other individuals, but it is difficult to obtain the authorization and consent of the individual;
- It is necessary to sign and perform a contract according to the requirements of the personal information subject;
- Collecting personal information from legally disclosed information, such as legal news reports, government information disclosure and other channels;
- Necessary to maintain the safe and stable operation of the products or services provided, such as discovering and handling product or service failures;
- The personal information controller is a news unit, and it is necessary for it to carry out legal news reports;
- The personal information controller is an academic research institution, and it is necessary to carry out statistical or academic research for the public interest, and when it provides the results of academic research or description to the outside world, it de-identifies the personal information contained in the results.

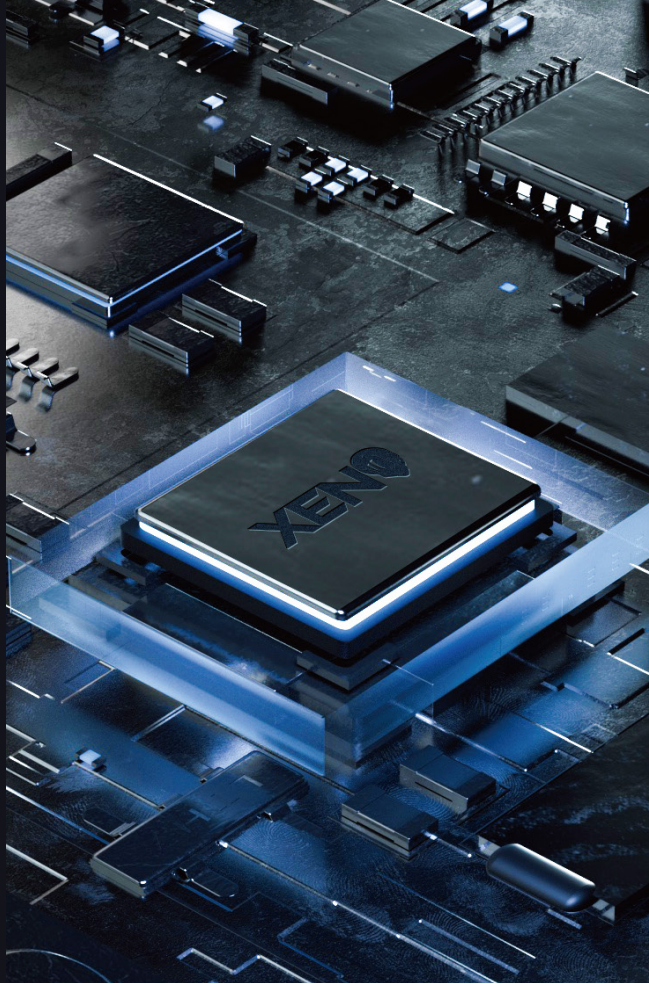
XENO CONFIGURATOR PRIVACY POLICY (CONT.):

④ The use of third-party SDK

bugly SDK: It is used for running crash information of mobile applications and improving the experience of application products. The terminal permissions used include: network access, access to network status, access to WLAN status, access to mobile device identification codes, and read/write storage permissions. If the permissions are not enabled, the use will not be affected. The information collected and stored by the SDK includes: SDK or API version, platform, timestamp, application identifier, application version, device model, terminal manufacturer, terminal device operating system version, and network status (WiFi). The information used to identify the device will be transmitted encrypted. Know the companies, organizations or individuals involved in the SDK.

⑤ How to update this policy

We will regularly review the Privacy Policy based on business and technical changes, and we may update this Privacy Policy. If we make major changes to this privacy policy, we will notify you through a pop-up window in the mobile device application, so that you can understand the information we collect and how we use it. Such Privacy Policy changes will apply from the effective date specified in the notice. We encourage you to periodically review this page for the latest information on our privacy practices. Your continued use of the product, mobile phone and/or services on any other device will be deemed acceptance of the updated Privacy Policy. When we collect more personal information from you or when we use or disclose your personal information for new purposes, we will ask for your consent again.



备注：

整页尺寸为170*130mm，出血线为2mm，
单页尺寸为85*130mm。